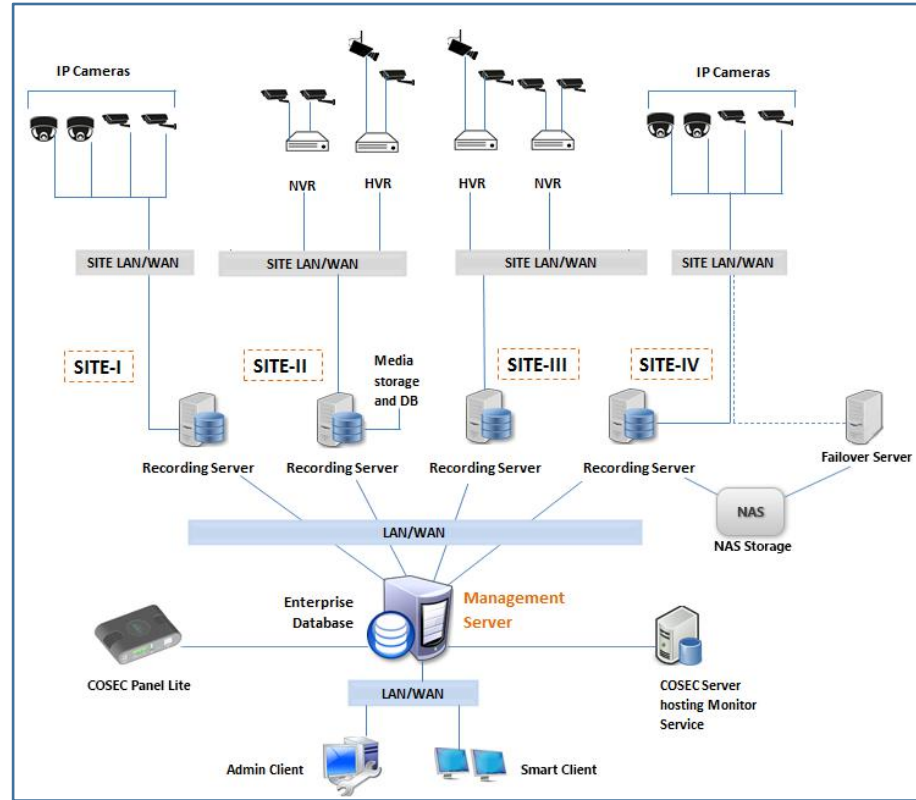
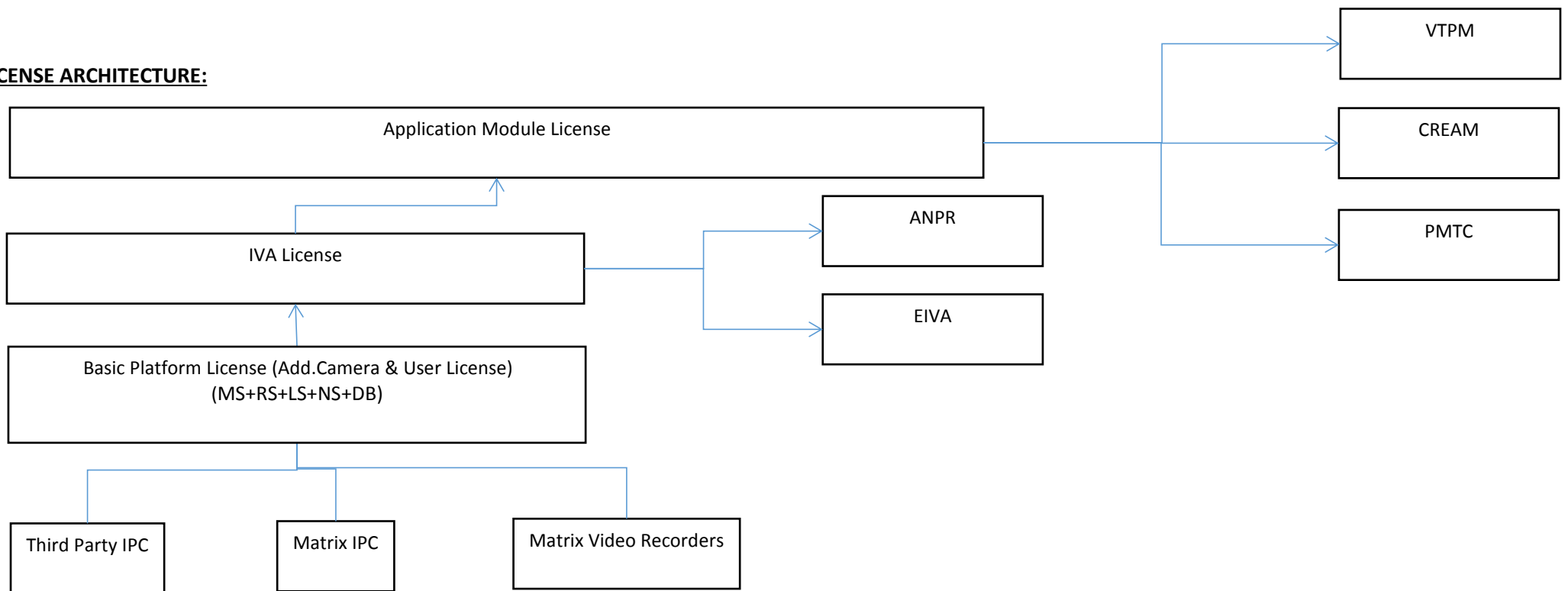


SATATYA SAMAS VMS TECHNICAL SPECIFICATION

PRODUCT ARCHITECTURE & COMPONENTS:



LICENSE ARCHITECTURE:



LICENSE TYPE:

Platform License	IVA License (Cam1/Cam3/Cam10)	Application Module License	Extra License	Software Up gradation License
SAMAS Platform	Enterprise IVA (EIVA)	Vehicle Tracking & Parking Management (VTPM) (Slot- 10/50/200)	Camera License (Channel 5/20/100)	Annual Up gradation Package
SAMAS Demo Platform	Automatic Number Plate Recognition IVA (ANPR)	Cognitive Monitoring, Analysis & Response Engine (CREAM) (Advance Scenario 5/10/50)	User License (User 1/3/10)	
		People Movement and Tracking (PMTC) (Camera - 1/3/10)		

PRODUCT PREREQUISITE:

1. Microsoft .NET Framework 4.5 & Above
2. Windows Installer 3.1
3. Microsoft Visual C++ 2015 Redistributable - vc_redist_x86.exe (IVA Server & Media Client) & vc_redist_x64.exe (RS & Admin Client)
4. Microsoft SQL Server 2008 R2 SP2 (For DBMS)
5. Crystal Report Runtime 13.0 (For Reports)
6. Microsoft Access Database Engine 2010 Redistributable (32-bit) or higher (For Importing Multi-Language File)

PRODUCT OFFERINGS:

FUNCTIONALITY	SATATYA SAMAS PLATFORM
Default No. of the Camera (FOC with SATATYA SAMAS PLT)	5
Maximum No. of the Cameras for Solution (Supported)	65535
Maximum No. of the Cameras Per Recording Server (Supported)	255
Default No. of Concurrent Users (FOC with SATATYA SAMAS PLT)	1
Maximum No. of the Concurrent Users (Supported)	65535
No. of MATRIX Video Recorders per server (Supported)	IPC Channel Based
Maximum No. of Recording Server (Supported)	65535
IVA Functions (FOC with SATATYA SAMAS PLT)	EIVA1 (Enterprise IVA 1 Channel)
Application Modules (FOC with SATATYA SAMAS PLT)	VTPM5 (Parking Management 5 Slot(s))
	CREAM1 (1 Advance Scenario)
	PMTTC1 (Crowd management - Application Module 1 Channel)
COSEC Access Control Integration (FOC with SATATYA SAMAS PLT)	Yes
Multi Display (FOC with SATATYA SAMAS PLT)	Yes

MODULE WISE FUNCTIONALITY COVERED

SATATYA SAMAS PLATFORM	SAMAS Platform License
Deployment Architecture	Centralized/ Distributed Management & Recording Components <ul style="list-style-type: none"> ✓ Management Server ✓ Recording Server ✓ Fail-over Server ✓ IVA Server ✓ Notification Server ✓ License Server
Centralized Management & Control	Yes
Operating System Platform	Microsoft Windows
DBMS Support	MS-SQL
Video Wall/ Multi-Display	Yes
ONVIF Support	Yes
Mobile App without Cost	Yes
Multi User Login	Allowed
Login Via SSL - Secured Socket Layer Login	Yes
Retrieval of Password through OTP (SMS/ E-mail)	Yes
E-mail & SMS Templates for Events & Action	Yes (Default & Custom)
Creating Custom/ User defined Events/ Alerts	Yes
Integrating COSEC & Custom Database	Yes (For User & Vehicle Details)
Activity/ Events Logs	Yes with Custom Search Criteria
License Management Configuration	Yes
Vehicle & User Attributes	Yes (Add/ Edit/ Delete)
Assigning Server as Recording Server or Fail-over Server	Yes
Server & Entity Connection with Dual ISP (Failover ISP Support)	Yes - Provision to Provide Different Three IPs <ul style="list-style-type: none"> ✓ Local Network IP ✓ Primary ISP ✓ Secondary ISP Applicable to Management Server; Recording Server; FailOver Server; IVA Server & Devices.

Fail-Over Server Support & Recording	<p>Yes</p> <ul style="list-style-type: none"> ✓ Local Drive Support ✓ Device/ Entity wise redundancy
Recording Server Configuration	<p>Yes</p> <ul style="list-style-type: none"> ✓ Activate Server ✓ Assigning & Configuring the Devices (Recorders & IPC) to Server (Auto Discovery & Manually) ✓ Set up Storage; Recording & Backup ✓ Location & Contact Information
Configuring Camera & Device	<p>Yes</p> <ul style="list-style-type: none"> ✓ Profile Setting ✓ Stream Parameters & Stream Usage ✓ Recording & Backup ✓ Events ✓ Basic Settings (OSD; Image Appearance)
Video Compression Format	H.265/ H.264/ MPEG-4/ MJPEG
Storage	<p>Yes</p> <ul style="list-style-type: none"> ✓ Local Drives ✓ Network Added Storage (NAS) ✓ FTP Drive
Recording Type	<p>Yes</p> <ul style="list-style-type: none"> ✓ Continuous Recording ✓ Manual Recording ✓ Motion Recording ✓ Event Recording
MATRIX Video Recorder Initiated Communication	Yes
Backup & Archiving	Primary Backup with Two Level Archiving Provision
Storage & Bandwidth Optimization	Yes
Day Highlight & Clip Capture	Yes
Configuration Cloning	Yes
System & Device Time Synchronization	Yes (Over ONVIF)
Camera Grouping	Yes
PTZ Positions & Tour Configuration	Yes
On Screen PTZ Controller	Yes
Video Export Format	Native (Proprietary Format)/ AVI
Watermarking on Export	Yes (Image/ Video)
Detection through Investigator	Yes (Based on the IVA License)
E-Map/ Site-Map	<p>Yes</p> <ul style="list-style-type: none"> ✓ Add Electronic Map (.jpg / .bmp Format) ✓ Place the Entity with different Appearance ✓ Configure Event Notification
System Monitoring & Health Chart	<p>Yes (Server/ Devices/ IPC)</p> <ul style="list-style-type: none"> ✓ Connected/ Not Connected Entity ✓ Stream Receiving ✓ CPU Usage/ Memory Usage/ Server Availability ✓ Storage Usage
Connection Downtime Report	Yes

Provision to mark Device Under Maintenance	Yes with Mandatory Reason ✓ Reports & Visual Notification
COSEC Access Control Integration	Yes - No restriction
Standalone Panel Support	Yes
I/O Integration with Sensors	Yes
System Setting	Yes ✓ Event/ Alarm/ Notification Log management ✓ IP Filter (Max. 99 IP Range) ✓ Active Directory Support
Multi Language Support	Yes ✓ User Interface Level - Labels ✓ Reports & Templates ✓ Input
System Account User	Accessibility wise User Rights (Add/ Edit/ Remove) ✓ Administrator ✓ Operator ✓ User
File Templates	✓ File Import/ Export ✓ Schedules ✓ Priority wise Alarms & Custom Alarms
API Integration for Third Party POS	Yes
Four Simultaneous Stream support	Yes - Live/ Local/ Recording/ Mobile
64 Camera Video Template with different Matrix	Yes
Personalize My View for Live View & Page Sequence	Yes
Event Log/ Activity Log & Export	Yes
Two Way Audio	Yes
One Click IPC & Monitor Control on Client	Yes
Alarm Management	Yes - Generation/ Acknowledgement / Comment/ Close
Operator Generated Event/ Manual Event/ Trigger IVA	Yes
Bookmark facility with Lock	Yes
Edge Recording (NETRA IPC & PARAM Device)	Yes
Video Pop up/ Email/ SMS/ Snapshot as Live Notification	Yes
Reports with Multi Language Support	Yes ✓ Summary Reports (Covered all the entity with Tabular/ Graphical representation - PDF & Excel File Format) ✓ IVA Reports
Report Personalization	Yes - Custom Logo & Font Size
Advance Report with Report Scheduler	Yes
PRODUCT ADD-ON	
CREAM - COGNITIVE RESPONSE ENGINE WITH AUTOMATED MONITORING	Advance Scenario based Event & Action Configuration License
Basic Scenario Without Cost	Single Event & Multiple Action Configuration
Advance Scenario	Multiple Actions against Multiple & Combinational Events Configuration Sources from All the Connected Modules & Entity ✓ Wait (Delay) as an Action

	<ul style="list-style-type: none"> ✓ Configure Action against Failed Scenario ✓ Logical Grouping of Event & Action ✓ Scenario Initiated ✓ Scenario Waiting ✓ Scenario Resumed ✓ Scenario Failed
Schedule Execution	Yes
Detect on Event	Yes
Event Source	<ul style="list-style-type: none"> <li style="width: 50%;">✓ Management Server <li style="width: 50%;">✓ Manual Trigger <li style="width: 50%;">✓ Recording Server <li style="width: 50%;">✓ Device <li style="width: 50%;">✓ Sensor <li style="width: 50%;">✓ Alarm <li style="width: 50%;">✓ IVA Server <li style="width: 50%;">✓ Fail-Over Server <li style="width: 50%;">✓ Perimeter Management Entity <li style="width: 50%;">✓ Crowd Premise <li style="width: 50%;">✓ Custom Event <li style="width: 50%;">✓ Emergency Event <li style="width: 50%;">✓ Camera <li style="width: 50%;">✓ Access Control Device <li style="width: 50%;">✓ Parking Management Entity <li style="width: 50%;">✓ Scenario
Action Choices	<ul style="list-style-type: none"> <li style="width: 50%;">✓ Capture Image <li style="width: 50%;">✓ Import File <li style="width: 50%;">✓ Generate File <li style="width: 50%;">✓ Open Door (COSEC Device) <li style="width: 50%;">✓ Live View on Event <li style="width: 50%;">✓ Send SMS <li style="width: 50%;">✓ Record Event <li style="width: 50%;">✓ Set PTZ Position <li style="width: 50%;">✓ Send E-mail <li style="width: 50%;">✓ Trigger COSEC - AUX Output <li style="width: 50%;">✓ Trigger Alarm <li style="width: 50%;">✓ Trigger IVA Detection <li style="width: 50%;">✓ Trigger Device - AUX Output <li style="width: 50%;">✓ Wait (Introduce Delay)
Reports	<p>Yes</p> <ul style="list-style-type: none"> ✓ Evidence Reports with Events; Parameters; Image Detailing
PERIMETER MANAGEMENT	EIVA - Channel based license
PERIMETER MANAGEMENT - IVA Module (EIVA)	<p>Yes</p> <ul style="list-style-type: none"> ✓ Intrusion Zone <ul style="list-style-type: none"> ✓ Directional Intrusion Detection Event ✓ Security Line <ul style="list-style-type: none"> ✓ Tripwire & Tailgating Events ✓ Perimeter Zone <ul style="list-style-type: none"> ✓ Motion/ No Motion/ Camera Tampering/ Missing Object/ Loitering Events
VEHICLE TRACKING & PARKING MANAGEMENT	VTPM - Parking Slot based License
Parking Management	<p>Multilevel hierarchical Parking Solution</p> <ul style="list-style-type: none"> ✓ Parking Slot/ Slot group/ Lane/ Area/ Facility ✓ I.e. (Facility (Area (Lane (Slot Group (Slot))))))
Vehicle Occupancy	<ul style="list-style-type: none"> ✓ Object Size based Occupancy ✓ LPR based Occupancy ✓ Parking Occupancy Sensor*
Vehicle Security Controls	Yes

	<ul style="list-style-type: none"> ✓ Integration with Access Control Device & Database ✓ Vehicle Whitelist/ Blacklist/ Authorized/ Not-Authorized/ Allowed/ Not Allowed Functionality ✓ Auto Authorization of Vehicle ✓ User Restriction 															
Parking Management Events	<p>Yes</p> <ul style="list-style-type: none"> ✓ Unauthorized Parking ✓ Prohibited Parking ✓ Improper Parking ✓ Slot Occupancy ✓ Vehicle Overstay ✓ Parking After Closing Service ✓ Driveways - Wrong Way detection 															
Parking Premises & Grouping	<p>Yes</p> <ul style="list-style-type: none"> ✓ Vehicle Counts (In/Out) ✓ Premise Availability 															
Slot Attributes & Entities	Yes (Add/ Edit/ Delete)															
Parking Management - Directional Signboards/ Counter & Widgets	Yes - Media Client & Multi Display Dashboard															
Reports	<p>Yes</p> <table style="width: 100%; border: none;"> <tr> <td style="width: 50%; vertical-align: top;"> <ul style="list-style-type: none"> ✓ Prohibited Parking ✓ Wrong Way Parking ✓ Unauthorized Parking ✓ Improper Parking ✓ Vehicle Overstay ✓ Parking After Closing Hours </td> <td style="width: 50%; vertical-align: top;"> <ul style="list-style-type: none"> ✓ Vehicle Counting ✓ Slot Occupancy ✓ Most Occupied Parking Entity ✓ Most Visited Parking Entity ✓ Least Occupied Parking Entity ✓ Least Visited Parking Entity </td> </tr> </table>	<ul style="list-style-type: none"> ✓ Prohibited Parking ✓ Wrong Way Parking ✓ Unauthorized Parking ✓ Improper Parking ✓ Vehicle Overstay ✓ Parking After Closing Hours 	<ul style="list-style-type: none"> ✓ Vehicle Counting ✓ Slot Occupancy ✓ Most Occupied Parking Entity ✓ Most Visited Parking Entity ✓ Least Occupied Parking Entity ✓ Least Visited Parking Entity 													
<ul style="list-style-type: none"> ✓ Prohibited Parking ✓ Wrong Way Parking ✓ Unauthorized Parking ✓ Improper Parking ✓ Vehicle Overstay ✓ Parking After Closing Hours 	<ul style="list-style-type: none"> ✓ Vehicle Counting ✓ Slot Occupancy ✓ Most Occupied Parking Entity ✓ Most Visited Parking Entity ✓ Least Occupied Parking Entity ✓ Least Visited Parking Entity 															
CROWD MANAGEMENT	PMTC - Channel based License															
Crowd Movement (Crowd Premise & Grouping)	<p>Yes</p> <ul style="list-style-type: none"> ✓ People Counting (In/ Out) ✓ Premise Availability 															
Edge People Counting	Supported through MATRIX IPC - Motorized Varifocal Variant(s)															
Live Event Counter	Yes															
Reports	<p>People Counting Reports with Computational Parameters</p> <ul style="list-style-type: none"> ✓ Tabular/ Graphical(Line/Bar/Column) Reports with PDF & Excel File Format 															
VEHICLE MANAGEMENT - ANPR	ANPR - Channel based License															
License Plate Detection & Recognition/ Automatic Number Plate Recognition	Yes															
Vehicle Blacklist & Whitelist	Yes through COSEC/ Custom Database															
Supported Country List	<table style="width: 100%; border: none;"> <tr> <td style="width: 33%;">✓ Algeria</td> <td style="width: 33%;">✓ Argentina</td> <td style="width: 33%;">✓ Australia</td> </tr> <tr> <td>✓ Belgium</td> <td>✓ Bolivia</td> <td>✓ Botswana</td> </tr> <tr> <td>✓ Brazil</td> <td>✓ Bulgaria</td> <td>✓ Cambodia</td> </tr> <tr> <td>✓ Canada</td> <td>✓ Cape Verde</td> <td>✓ Chile</td> </tr> <tr> <td>✓ Columbia</td> <td>✓ Costa Rica</td> <td>✓ Croatia</td> </tr> </table>	✓ Algeria	✓ Argentina	✓ Australia	✓ Belgium	✓ Bolivia	✓ Botswana	✓ Brazil	✓ Bulgaria	✓ Cambodia	✓ Canada	✓ Cape Verde	✓ Chile	✓ Columbia	✓ Costa Rica	✓ Croatia
✓ Algeria	✓ Argentina	✓ Australia														
✓ Belgium	✓ Bolivia	✓ Botswana														
✓ Brazil	✓ Bulgaria	✓ Cambodia														
✓ Canada	✓ Cape Verde	✓ Chile														
✓ Columbia	✓ Costa Rica	✓ Croatia														

	<ul style="list-style-type: none"> ✓ Cuba ✓ Denmark ✓ Estonia ✓ Greece ✓ Hungary ✓ Italy ✓ Italy-Vintage ✓ Malaysia ✓ Netherlands ✓ Poland ✓ Slovakia ✓ South Africa - Personalized ✓ Switzerland ✓ UK Great-Britain ✓ Venezuela ✓ Cyprus ✓ Ecuador ✓ Germany ✓ Guatemala ✓ India ✓ Israel ✓ Kenya ✓ Namibia ✓ Peru ✓ Romania ✓ Slovenia ✓ Spain ✓ Turkey ✓ Ukraine ✓ Vietnam ✓ Czech Republic ✓ El Salvador ✓ France ✓ Honduras ✓ Iceland ✓ Italy-Moped ✓ Latvia ✓ Norway ✓ Portugal ✓ Singapore ✓ South Africa ✓ Sweden ✓ Turkey-Inverse ✓ Uruguay ✓ Numerical 3 to 8 Digit
Reports	<p>Yes</p> <ul style="list-style-type: none"> ✓ Vehicle Detection ✓ Vehicle Unidentified ✓ White Listed Vehicle Identified ✓ Vehicle Identified ✓ Blacklisted Vehicle Identified ✓ Suspected Vehicle Identified